



エビデンス情報レファレンスツール

DynaMed[®]

— 最新かつ客観的な臨床医学情報を、素早く届ける —

- ✓ 500誌以上の学術誌、160以上のガイドラインをモニター
- ✓ 専任の編集チームが批判的吟味を加え、エビデンスを集約しリスト化
- ✓ 収録データは毎日更新。全診療科のトピック（記事）を収録
- ✓ 画像データ、根拠に基づいたRecommendationsを収録

2019_Aug

EBSCOHealth

Specialties ▾

領域ごとにトピックを見る場合

CONFIDENCE IN PRACTICE

 Search DynaMed

キーワードを入力します

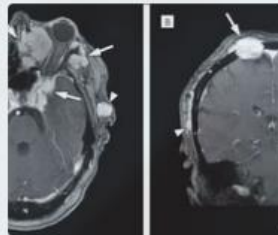
Browse Specialties



Cardiology

Cerebrovascular
Disease,
Cervical Artery ...

[View all](#)



Oncology

Breast Cancers,
Lung Cancers,
Urologic ...

[View all](#)



Dermatology

Infestations,
Bites and
Stings, Inherited ...

[View all](#)

オートコンプリートの表示方法は、DynaMed Plusとほぼ同じ形式に。

CONFIDENCE IN PRACTICE

upper

GO TO

- Upper extremity amputation
- Upper extremity deep vein thrombosis
- Upper respiratory infection (URI) in children
- Cystitis and upper urinary tract infections (UTI) in men
- Acute nonvariceal upper gastrointestinal bleeding

SEARCH FOR

- upper airway cough syndrome
- upper extremity deep vein thrombosis
- upper gastrointestinal bleeding

Go Toの下にあるトピックをクリックすると、ダイレクトにその項目に移動します。

Search Forの下にある用語をクリックすると、その用語でデータベースを検索します。

Measles

閲覧情報の切り替え

トピックのアラート設定

TOPIC IMAGES (5) UPDATES



Overview and Recommendations

Background

Evaluation

Management

Prevention

Related Summaries

General Information

Epidemiology

Etiology and Pathogenesis

History and Physical

Diagnosis

Management

Complications and Prognosis

Prevention and Screening

Guidelines and Resources

Overview and Recommendations

Background

- Measles is a highly contagious, vaccine-preventable viral illness causing fever and rash.
- Measles is endemic throughout the world, particularly in Europe, Africa, and most of Asia, although largely eradicated from the Americas.
- Sporadic epidemics in the United States occur, typically due to importation from endemic countries and subsequent spread among unvaccinated persons.
- Spread occurs from person to person mainly via large respiratory droplets, with virus able to survive for up to 2 hours on surfaces or in air spaces.
- The incubation period is about 10-12 days to onset of fever and 14 days to onset of rash.
- The infectious period lasts from about 4 days before to about 4 days after onset of the rash.

Evaluation

- Ask patients about a prodrome of fever, cough, coryza, and conjunctivitis lasting about 2-4 days.
 - Fever may be high (103-104°F)
 - Koplik spots, small bluish-white spots on the buccal mucosa, appear about 1-2 days before the prodrome and are pathognomonic for measles.

TOPIC EDITOR

Anne Neilan MD, MPH

RECOMMENDATIONS EDITOR

Amir Qaseem MD, PhD, MHA, FACP

DEPUTY EDITOR

Vito Iacoviello MD, FIDSA

Produced in collaboration with American College of Physicians



Images in topic (5)

View all



トピック内のエビデンスの記載形式は、
現行のDynaMed Plusとほぼ同じに。

*2019.08時点

トピック本文、画像、更新履歴を
タブで切り替えて表示できます。

Measles

TOPIC **IMAGES (5)** UPDATES



Koplik Spots




Measles rash



Measles



Measles

TOPIC  IMAGES (5) UPDATES

Overview and Recommendations

Background

Evaluation

Overview and Recommendations

Background

- Measles is a highly contagious, vaccine-preventable viral illness causing fever and rash.

TOPIC EDITOR

Neilan MD, MPH

RECOMMENDATIONS EDITOR

Amir Qaseem MD, PhD

■ トピックのアラート設定 ■

トピックに新しい情報が追加された時のアラート設定が行えます。

Follow

Updates to followed content are available on DynaMed and via email.

Email Options:

- Practice-Changing Updates Only
- All Updates
- No email, please. Just show my updates on DynaMed.

Follow

Cancel

インパクトが高い更新や全ての更新等、配信レベルの設定ができます。

Specialties ▾

Specialtiesから領域ごとに
トピックを見る場合

Editorial

CONFIDENCE IN PRACTICE

Search DynaMed

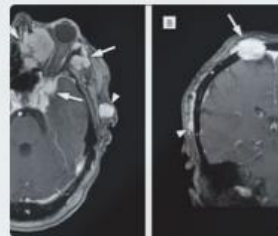
Browse Specialties



Cardiology

Cerebrovascular
Disease,
Cervical Artery ...

[View all](#)



Oncology

Breast Cancers,
Lung Cancers,
Urologic ...

[View all](#)



Dermatology

Infestations,
Bites and
Stings, Inherited ...

[View all](#)

各領域から、ツリー構造を
辿りながらトピックを確認
できます。

DynaMed



KUNIAKI YAMA
K YAMAMOTO

Specialties ^

Calculators

About DynaMed

Why DynaMed

Editorial

Adult primary care

Allergy

Anesthesiology and pain management

Cardiology

Critical care

Dermatology

Ear nose and throat (ENT)

Emergency medicine

Endocrinology

Family medicine

Gastroenterology

Geriatrics

Gynecology

Hematology

Hospital medicine

Immunology

Infectious diseases

Neonatology

Nephrology

Neurology

Neurosurgery

Obstetric medicine

Oncology

Ophthalmology

Oral health

Orthopedics and sports medicine

Palliative care

Pathology and laboratory medicine

Pediatrics

Psychiatry

Pulmonary medicine

Rheumatology

Sleep medicine

Surgery

Urology

例) Cardiology

ツリーが展開し、表示されたトピックから閲覧ができます。

Specialty

Cardiology

- › Cerebrovascular disease
- › Congenital heart disease
- › Acute coronary syndromes
- › Stable coronary artery disease (cad)
- › Electrophysiology
- ▼ Heart failure
 - › Cardiomyopathies
 - › Cardiac conditions associated with heart failure
 - › Heart failure with preserved ejection fraction
 - › Heart failure with reduced ejection fraction
 - › Right heart failure
 - › Quality measures
- › Hypertension

Cardiology

- › Cerebrovascular disease
- › Congenital heart disease
- › Acute coronary syndromes
- › Stable coronary artery disease (cad)
- › Electrophysiology
- ▼ Heart failure
 - ▼ Cardiomyopathies
 - Arrhythmogenic right ventricular dysplasia
 - Cardiac amyloidosis
 - Cardiac sarcoidosis
 - Cardiomyopathy (list of topics)
 - Chagas-associated heart disease
 - Dilated cardiomyopathy
 - Hypertrophic cardiomyopathy

- 個人アカウント機能の強化について -


■ 個人アカウントのメリット ■

- 1) 院外、学外からのリモートアクセスが可能になります。
- 2) フォローするトピックや閲覧履歴の表示など、個人の嗜好に基づいた情報を表示できます。
- 3) 別のDynaMed契約施設へ転職・異動した場合も、元の個人アカウントを引継いで使うことができます。

個人アカウントの新規登録について

SIGN IN → 遷移した画面で**Register Now**をクリック→
Email、パスワード、専門領域等を登録します。

このEmailとパスワードを、個人アカウントのサインインと
リモートアクセスのログインで使用します。



The screenshot shows the DynaMed website interface. The top navigation bar includes the DynaMed logo on the left and a 'SIGN IN' button with a user icon on the right. Below the navigation bar, there are links for 'Specialties', 'Calculators', and 'About'. A large yellow box is overlaid on the right side of the page, containing the text '個人アカウントのサインインもここから行います。' (You can also sign in with your personal account from here). The main content area features the text 'CONFIDENCE IN PRACTICE' and a search bar with the placeholder text 'Search DynaMed'.

個人アカウントのサインインも
ここから行います。

CONFIDENCE IN PRACTICE

Search DynaMed

Emailアドレスでのリモートアクセスについて

DynaMed® Sign In Free Trial

About ▾ | Why DynaMed? ▾ | Editorial Overview ▾

Log in to DynaMed

What kind of subscription do you have?

Individual
I purchased my own subscription

Institution
I want to access remotely using my group's subscription

<https://www.dynamed.com/home/log-in>

にアクセスし、**Institution**を選択します。

登録したEmailとパスワードでログインします。

閲覧履歴の表示等について

機関契約のDynaMedにログイン後、
登録した個人アカウントにサインイン



SIGN IN

[Learn more about CME](#)

DynaMed | Editorial

CONFIDENCE IN PRACTICE



Search DynaMed

Updates

FOLLOWED ALL

13 Jun 2019

1,022 cases of measles reported in 28 states in the United States between January 1 and June 6, 2019 (CDC Measles Cases and Outbreaks 2019 June 10)

View in [Measles](#)

11 Jun 2019

addition of case-manager-led multicomponent intervention to usual care may not reduce

個人アカウントにサインインすることで、
閲覧履歴やフォローするトピックなど、
ユーザーの好みに紐づいた情報を確認
できるようになります。

COPD (Eur Respir J 2018 Jan 11)

View in [COPD](#)

11 Jun 2019

motivational interviewing-based health coaching may not improve COPD-related quality of life or dyspnea in adults with moderate-to-severe COPD with limited resources (Ann Am Thorac Soc 2018)

Recently Viewed

[Abdominal aortic aneurysm \(AAA\)](#)

[Decision rules for computed tomography in children with head injury](#)

[Measles](#)

[Acute rhinosinusitis in adults](#)

[Gastrointestinal angiodysplasia](#)

[COPD](#)

[Cough - approach to the patient](#)

[Chronic asthma in children](#)

[Fever of unknown origin \(FUO\) in children - approach to the patient](#)

[Peanut allergy](#)

Followed

+ COPD

+ Abdominal aortic aneurysm (AAA)

+ Peanut allergy

+ Measles

利用に関するお問い合わせは、下記まで

EBSCO Information Services Japan株式会社

@ jp-medical@ebSCO.com

☎ 03-5342-0701